

Recovery Drum.

307 or 427 Liter.



EXECUTION

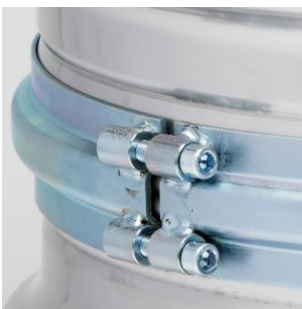
- sizes 307 or 427 liter
- inner diameter 650mm
- with inside support ring
- locking ring with 4 screw connections
- G2 and G3/4-closures in the top
- bottoms seam-welded to body
- body butt-welded

MATERIALS

- stainless steel 1.4301
- O-ring gasket made of EPDM

QUALITY MANAGEMENT

- certified according to ISO 9001 / ISO 14001 / OHSAS 18001



YOUR CUSTOMER BENEFITS AT A GLANCE

- ✓ unique solution in the event of an accident
- ✓ with T-coding and additional approval for liquid and solid substances of the packaging group I
- ✓ easy handling with optimal two-halves construction
- ✓ long life cycle by high-grade stainless steel
- ✓ closure components available as accessories / spare parts